



reisingorthodontics
children and adults

Available only at Reising Orthodontics

New!

OrthoCure™
The Cure for Braces!



See no braces, feel no braces!

Can you see my braces?



Before → After



"Can you see my braces?"



Before → After



Invisible

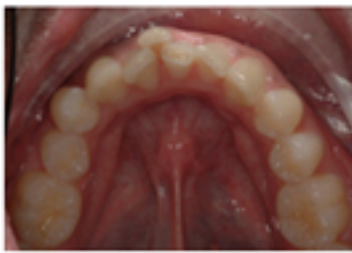
The OrthoCure system achieves stealth by placing the "braces" on the back side of front teeth. The braces on the back teeth are still placed on the front side but they are very well camouflaged (see photos). You can see the braces on the back teeth if you look real close but know else will know they're there.

Comfortable

The problem with placing braces on the back side of teeth has always been extreme discomfort! OrthoCure has solved this problem by eliminating the bulky protruding features that have made braces painfully irritating. The OrthoCure brace is slimmed down to its most fundamental part called the "slot" – an extremely small rectangular tube. This tiny tube is embedded within a custom contoured mound of tooth colored "bonding material" that creates a silky smooth convex dome blended into the anatomy of each tooth so that you'll hardly notice it's there.

Effective

OrthoCure braces work much like traditional braces. But the effectiveness and efficiency of OrthoCure exceeds traditional braces because it's the first system ever created that accounts for all six degrees of freedom of spatial orientation. That means every brace is fully customized in its spatial orientation and shape. In addition, whereas traditional braces are positioned by hand, the position of each OrthoCure brace is precisely set with a sophisticated positioning device that ensures extreme accuracy – every tooth, every time!

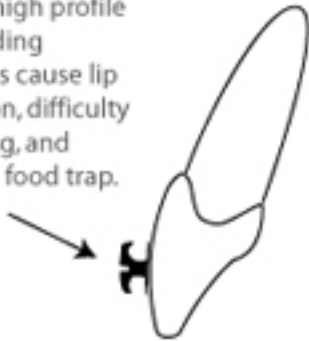


Before → After



Compare OrthoCure to Traditional Braces

Large, high profile protruding features cause lip irritation, difficulty cleaning, and creates food trap.



Traditional front side brace

Large, high profile protruding features cause great irritation to tongue, difficulty speaking and creates food trap.



Traditional back side (Lingual) brace

Ultra smooth, customized dome shaped outer surface with extremely low profile



The OrthoCure brace